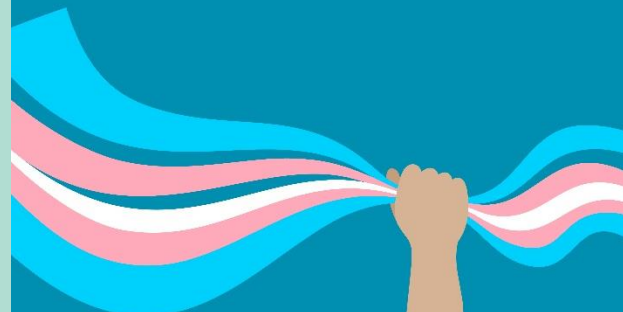


# Colby-Sawyer College & Dartmouth Health Presents Healthcare for Transgender and Gender Diverse Patient Populations



**Friday, November 3, 2023**

**Registration: 7:45 – 8:15 am**

**Conference: 8:15 am – 4:30 pm**

**The Granite Ballroom, Hilton Garden Inn, 35 Labombard Road, Lebanon, NH**

## OVERVIEW

This program aims to explore key aspects of gender-affirming care and to better understand the challenges faced by transgender and gender-diverse (TGD) patients. We hope that your attendance at this conference will offer you enhanced knowledge and skills that will support you in making a positive impact in TGD healthcare. We plan to address the following key areas of importance:

- Use of a person's asserted name and pronouns;
- Awareness of key terms in gender-affirming care;
- Gaining insights into the roles of healthcare professionals in a team-based approach for TGD patients;
- Emphasizing the importance of collaboration across disciplines and professions;
- Identifying societal issues affecting TGD patients' healthcare experiences;
- Discussing the support structures needed to address these challenges.

Active participation, open dialogue, and a willingness to learn and grow are encouraged. By the end of this full-day training, we hope you will feel empowered to provide compassionate and affirming care to transgender and gender-diverse patients at every point of entry across the healthcare system.

## LEARNING OUTCOME

At the conclusion of this learning activity, (at least 75% of) participants will be able to describe the key elements of an interprofessional team-based approach to treatment that is essential when providing healthcare to Transgender/Gender Diverse (TGD) patients.

## TARGET AUDIENCE

Any healthcare professional who is interested in learning more about providing affirming, inclusive, and sensitive care to our TGD patient population.

## REGISTRATION

The registration fees are:

- The fee is waived for all healthcare students who are currently enrolled in school and who are not currently employed.
- The fee for all others is \$50.00.
- For a need-based scholarship, please contact Amanda Sanchez at [Amanda.E.Sanchez@Hitchcock.org](mailto:Amanda.E.Sanchez@Hitchcock.org).

Advance registration is required for planning purposes. Please make every effort to register seven (7) business days in advance of the learning activity. We will not accept walk-in or late registrants on the day of the learning activity.

To register, please visit the event website: <https://dh.cloud-cme.com>. For registration questions, please call (603) 653-1234 or email [clpd.support@hitchcock.org](mailto:clpd.support@hitchcock.org).

If you need to cancel your registration, please call (603) 653-1234 or email [clpd.support@hitchcock.org](mailto:clpd.support@hitchcock.org). Cancellations should be made five (5) business days in advance of the learning activity.

## ACCREDITATION

In support of improving patient care, Dartmouth Health is jointly accredited by the Accreditation Council for Continuing Medical Education (ACCME), the Accreditation

Council for Pharmacy Education (ACPE), and the American Nurses Credentialing Center (ANCC), to provide continuing education for the healthcare team.

Dartmouth Health designates this live activity for a maximum of 6.75 *AMA PRA Category 1 Credit(s)*<sup>™</sup>. Physicians should claim only the credit commensurate with the extent of their participation in the activity.

Dartmouth Health designates this live activity for a maximum of 6.75 ANCC contact hours.

All other learners may claim CME-designated participation credit. Consult your professional licensing board regarding the applicability and acceptance of CME-designated participation credit for programs certified for credit by organizations accredited by Joint Accreditation for Interprofessional Education.

Application for social work continuing education credits has been submitted; please email [Amanda.E.Sanchez@hitchcock.org](mailto:Amanda.E.Sanchez@hitchcock.org) to check on the status of this application.

Social workers must attend 80% of the entire learning activity to claim the credit. In addition, they must sign in and out on the sign-in sheet at the registration desk to record their attendance.



**REGISTER ONLINE:** <https://dh.cloud-cme.com/course/courseoverview?P=0&EID=140250>