

# Palliative Care ECHO 5.0 Improving Care for those with Serious Illness

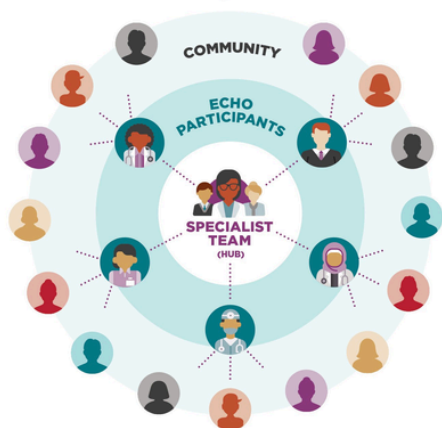
## Course Description:

Palliative care clinicians manage complex symptoms, work with patients and families to establish goal aligned care, and strive to improve the quality of life for those with serious illness. Most clinicians can provide primary palliative care for those with serious illness and at the end of life. In Year 5 of the Interprofessional Palliative ECHO® program, we will continue to build on the basics and include vulnerable populations, situations and settings through didactic presentations and participants' case-based presentations in this teach-teach/learn-learn model. Clinicians will acquire skills and establish professional connections to improve the care of patients with serious illness and at the end-of-life. Participation in Years 1-4 Palliative ECHO is not required. Didactics from Years 1-4 will be accessible for review.

## Who Should Attend

Physicians, Advance Practice Providers, Nursing professionals, Social Workers, Physical/Occupational therapists, Chaplains, Volunteers, Counselors, Behavioral health providers, Volunteers, Anyone who cares for patients with serious illness

### ALL TEACH, ALL LEARN



Bringing together expertise, wisdom & experience to create positive change

## Registration

- Sessions are free of charge
- To register scan QR code or [click here](#)



## Schedule

- First Tuesday of the month from 12:00-1:00pm EST, October 2025 through June 2026

### Topics Include:

- October 7, 2025 - Moral Injury and Moral Distress
- November 4, 2025 - VSED versus Minimal Comfort Feeding
- December 2, 2025 - How to Create a Legacy
- January 6, 2026 - Prolonged Grief Disorder
- February 3, 2026 - Goals of Care for People with Disabilities
- March 3, 2026 - Cannabis use in Serious Illness
- April 7, 2026 - Agitation in serious illness/EOL impact on patient and care partner
- May 5, 2026 - Palliative Care for the Justice Involved
- June 2, 2026 - Palliative Care in High-Risk Perinatal Care

## Questions:

Email: [ECHO@hitchcock.org](mailto:ECHO@hitchcock.org)

Website: <https://go.d-h.org/project-echo>



## Accreditation

### Learning Objectives:

At the conclusion of this learning activity, participants will be able to:

- Discuss at least two ways to enhance care of patients with serious illness including improved management of issues related to serious illness and the ability to address goals of care in diverse populations.

### Accreditation:

In support of improving patient care, Dartmouth Health is jointly accredited by the Accreditation Council for Continuing Medical Education (ACCME), the Accreditation Council for Pharmacy Education (ACPE), and the American Nurses Credentialing Center (ANCC), to provide continuing education for the healthcare team.

#### American Medical Association (AMA)

Dartmouth Health designates this live activity for a maximum of *9.0 AMA PRA Category 1 Credits™*. Physicians should claim only the credit commensurate with the extent of their participation in the activity.

#### American Nurses Credential Center (ANCC)

Dartmouth Health designates this live activity for a maximum 9.0 ANCC contact hours.

#### Accreditation Council of Pharmacy Education (ACPE)

Dartmouth Health designates this knowledge-based activity for a maximum of 9.0 hours. Credit will be provided to NABP CPE Monitor within 60 days after the activity completion.

UAN: JA0000201-0000-25-020-L99-P and JA0000201-0000-25-020-L99-T

#### Association of Social Work Boards (ASWB)

As a Jointly Accredited Organization, Dartmouth Health is approved to offer social work continuing education by the Association of Social Work Boards (ASWB) Approved Continuing Education (ACE) program. Organizations, not individual courses, are approved under this program. Regulatory boards are the final authority on courses accepted for continuing education credit. Social workers completing this course receive 9.0 general continuing education credits.

**Other Learners:** All other learners may claim CME-designated participation credit. Consult your professional licensing board regarding the applicability and acceptance of CME-designated participation credit for programs certified for credit by organizations accredited by Joint Accreditation for Interprofessional Education.